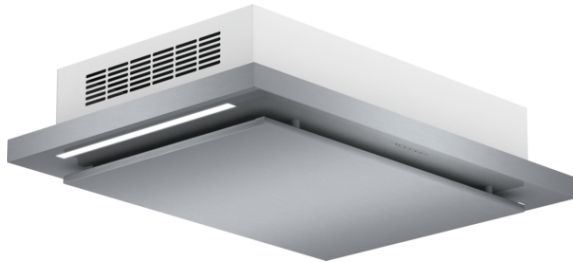


**Serie | 6 Hoods**
**DID106T50**


- **Suspended ceiling hood:** for an easy installation in the ceiling.
- **Extraction rate in recirculation:** at 850 m<sup>3</sup>/h, it quickly ensures optimal kitchen air quality.
- **LED lighting:** extremely low energy consumption.
- Intensive speed setting with revert gives a quick intensive 6 min. burst to clear strong odours and then reverts back to the normal setting.

**Technical Data**

Typology :	Traditional
Approval certificates :	CE
Length of electrical supply cord (cm) :	0
Minimum distance above an electric hob :	600
Minimum distance above a gas hob :	900
Net weight (kg) :	27.0
Type of control :	Electronic
Maximum output air extraction (m <sup>3</sup> /h) :	0
Boost position output recirculating (m <sup>3</sup> /h) :	850
Maximum output recirculating air (m <sup>3</sup> /h) :	780
Number of lights (Stck) :	2
Diameter of air outlet (mm) :	150
Grease filter material :	Washable aluminium
EAN code :	4242002909028
Connection rating (W) :	192
Current (A) :	16
Voltage (V) :	220-240
Frequency (Hz) :	50
Plug type :	no plug
Installation type :	Built-in



4 242002 909028

**Optional accessories**

- DHZ5418 : cable guidance frame  
 DSZ500P : Active carbon filter

## Serie | 6 Hoods

### DID106T50

---

#### Key Information

- Electronic control
- Electronic control via Soft touch button control
- Interval operation
- Capacitor motor

#### Design

- 100 cm wide
- Brushed steel
- Downdraft
- Designed for ceiling mounted installation

#### Features

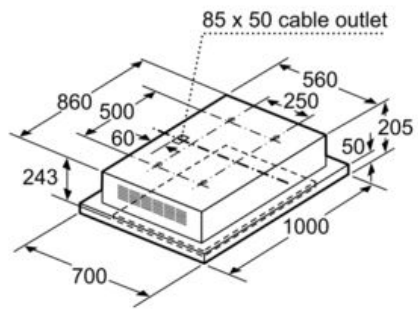
- Soft touch button control with Electronic display
- 3 power levels & intensive setting
- Automatic intensive revert (6mins)
- Automatic after running (30 min)
- Rim ventilation
- 2 x 6W LED
- Dimmer function
- Neutral white lights
- 2 removable metal grease filter cassettes
- Filter cover stainless steel, Removable metal grease filters
- Saturation indicator for metal and charcoal filter
- Filter saturation indicator

#### Performance/technical information

- Suitable for recirculated operation
- Power rating: 192 W
- Dimensions recirculating (HxWxD): 243-243 x 1000 x 700 mm
- Light Intensity: 345 lux
- Colour Temperature: 4000 K

#### Optional accessories

- For recirculated extraction charcoal filter (accessory) needed

**Serie | 6 Hoods****DID106T50**

measurements in mm

