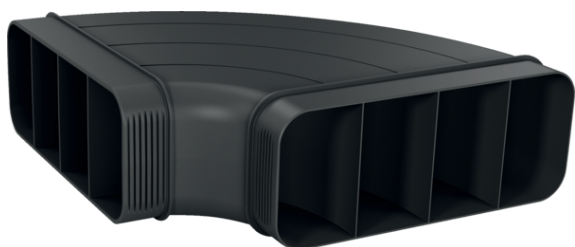


Flat duct, 90 °, horizontal
Z861SB1



COOKING PASSION SINCE 1877



Features

Technical Data

Dimensions of the packed product (HxWxD) (mm) : 130 x 300 x 305

Pallet dimensions : 175.0 x 80.0 x 120.0

Quantity per packing unit : 1

Standard number of units per pallet : 80

Net weight (kg) : 0.567

Gross weight (kg) : 1.0

EAN code : 4242004253570



4 242004 253570

Flat duct, 90 °, horizontal
Z861SB1

Features

- 90° flat duct bend element (male) in horizontal configuration
- Aerodynamically optimised design to minimise pressure loss and maximise air flow rate. Easy-to-cut & easy-to-connect via the female connector sleeve element.
- This accessory complies with the Needle Flame Test (according to IEC 60695-5-11), the V2 flammability class (according to UL94) and the B1 building material class (DIN 4102-1)

Flat duct, 90 °, horizontal
Z861SB1

Dimensioned drawings

