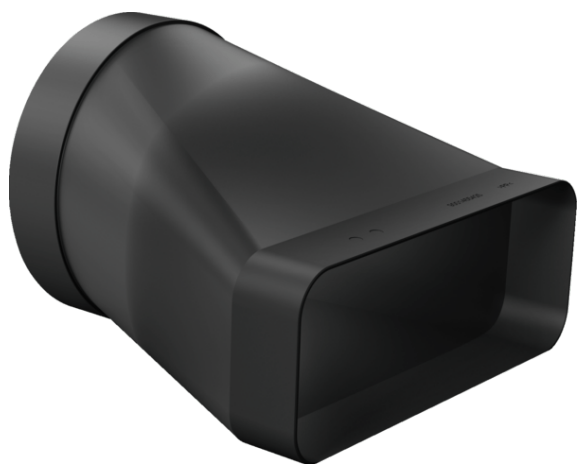


Adapter duct, # 150 mm, round-flat
Z861S10



COOKING PASSION SINCE 1877



Features

Technical Data

Dimensions of the packed product (HxWxD) (mm) : 190 x 235 x 220

Pallet dimensions : 175.0 x 80.0 x 120.0

Quantity per packing unit : 1

Standard number of units per pallet : 96

Net weight (kg) : 0.267

Gross weight (kg) : 0.5

EAN code : 4242004253303



Adapter duct, # 150 mm, round-flat
Z861S10

Features

- Flat to round converter Ø 150mm
- Round-flat adapter accessory (male)
- Aerodynamically optimised design to minimise pressure loss and maximise air flow rate. Easy-to-cut & easy-to-connect via the female connector sleeve element.
- This accessory complies with the Needle Flame Test (according to IEC 60695-5-11), the V2 flammability class (according to UL94) and the B1 building material class (DIN 4102-1)

Adapter duct, # 150 mm, round-flat
Z861S10

Dimensioned drawings

